



Santa Ana
Unified School District

July 26, 2011

Measure G Update

Facilities & Governmental Relations

Cathie Olsky, Ed.D., Deputy Superintendent

Joe Dixon, Assistant Superintendent

Tova Corman, Senior Facilities Planner

Jessica Mears, Facilities Planner

Board of Education

José Alfredo Hernández, J.D., President

Rob Richardson, Vice President

Audrey Yamagata-Noji, Ph.D., Clerk

John Palacio, Member

Roman Reyna, Member



- Revenue
- Projects completed/underway
- Projects planned
- Portable inventory
- Measure G brochure update



Revenue Funding	2008	2009	2010	2011	2012
Measure G - 1st Sale	\$99,997,856				
Measure G - 2nd Sale		\$34,861,114			
Measure G - 3rd Sale			\$28,407,365		
1st - QSCB		\$19,240,000			
2nd - QSCB			\$17,535,000		
State Funding	\$35,546,620	\$9,686,868	\$56,948,184	\$37,805,496	
ERP Funding		\$3,146,627			
E-Rate Reimbursement				\$583,595	\$4,336,316
Year Total	\$135,544,476	\$66,934,609	\$102,890,549	\$38,389,091	\$4,336,316
Total Program	\$135,544,476	\$202,479,085	\$305,369,634	\$343,758,725	\$348,095,041

Program	2008 Anticipated District Match (in millions)	2011 Identified District Match (in millions)	2008 Anticipated State Funding (in millions)	2011 Leveraged Funding Identified (in millions)
Critically Overcrowded Schools (COS)	\$40	\$45	\$40	\$45
Overcrowding Relief Grant (ORG)	\$39	\$74	\$41	\$74
Modernization (MOD)	\$27	\$62	\$41	\$92
Sub-Total	\$106	\$181	\$120	\$211
CTE	-	-	-	\$2
E-Rate	-	-	-	\$5
Other {CFC (YMCA) and City of Santa Ana}	-	-	-	\$10
Total	\$106	\$181	\$120	\$228

Additional \$4 million Identified (Garfield)

Additional \$2 million Identified (Mitchell)

Additional \$6 million Identified!



School	Scope	Progress
COS Projects		
Carr IS	Two-story, 16-classroom building and site work	Completed 2009
Diamond ES	Two-story, 16-classroom building and site work	Completed 2009
Greenville FES	Two-story, 20-classroom building, parking lot, and site work	Completed 2009
Kennedy ES	Two-story, 24-classroom building, parking lot, and site work	Completed 2010
Lowell ES	Two-story, 16-classroom building and site work	Completed 2010
Madison ES	Two-story, 32-classroom building, parking lot, and site work	Completed 2010
Martin ES	Two-story, 16-classroom building, parking lot, and site work	Completed 2009
Santiago ES	Two-story, 16-classroom building, , parking lot, and site work	Completed 2009
MOD Projects		
Lincoln ES	Lunch shelters, PA system, new entryway, fencing	Completed 2010
Santa Ana HS	Historic restoration, modernization, technology upgrades	Underway
Hoover ES	Modernization, wall configuration, classroom and restroom upgrades	Underway
Jackson ES	Modernization, classroom and restroom upgrades	Underway
MacArthur FIS	New 12-classroom building, with new restrooms, site work, technology	Underway
Saddleback HS	Modernization, wall configuration, classroom and restroom upgrades	Underway
Sepulveda ES	ADA upgrades, technology	Underway
Willard IS	Modernization, classroom and restroom upgrades	Underway



School	Scope	Progress
ORG Projects		
Century HS	Two-story 40-classroom building, artificial track /synthetic turf, site work, fencing, technology	To be completed December 2011
Heninger ES	Two-story 20-classroom building, site work, new parking lot, fencing, technology	Open 2011-12 School Year
Santa Ana HS	Two-story 29-classroom building, artificial track /synthetic turf, site work, fencing, technology	Open 2011-12 School Year
Sierra IS	Two-story 29-classroom building, site work, fencing, technology	Building open/Site work underway
Spurgeon IS	Two-story 16-classroom building, site work, fencing, technology	Open 2011-12 School Year
Davis ES	Two-story 12-classroom building, site work, fencing, technology	Underway
Edison ES	Two-story 24-classroom building, new parking lot, site work, fencing, technology	Underway
Joint Use Project		
Segerstrom FHS	50 Meter swimming pool, locker rooms, bleachers	Completed 2010
Energy Efficiency Project		
Saddleback HS	Solar photovoltaic system, solar panels and solar shade trees, solar thermal heating, roof, HVAC units	Completed 2010



Theater/Gym
50 classrooms



Completion:

Theater/Admin/Classrooms – by the start of school
(Buildings 1-3)

Classroom Buildings – Winter break
(Buildings 12E & 17)

Gym/Locker Rooms/Classrooms – August 2012
(Buildings 6, 8, 12W, 14)

Finished



Restrooms

- ADA upgrades
- Casework
- Elevators
- Public Address
- Fire Alarm



Exterior Paint

Walnut Street Improvements



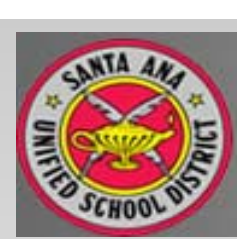
To be completed by the start of school

Willard Modernization

1st Floor Occupancy:
By the start of school

2nd Floor Occupancy:
Spring Break 2012





ADA upgrades

Technology

Electrical

Restrooms

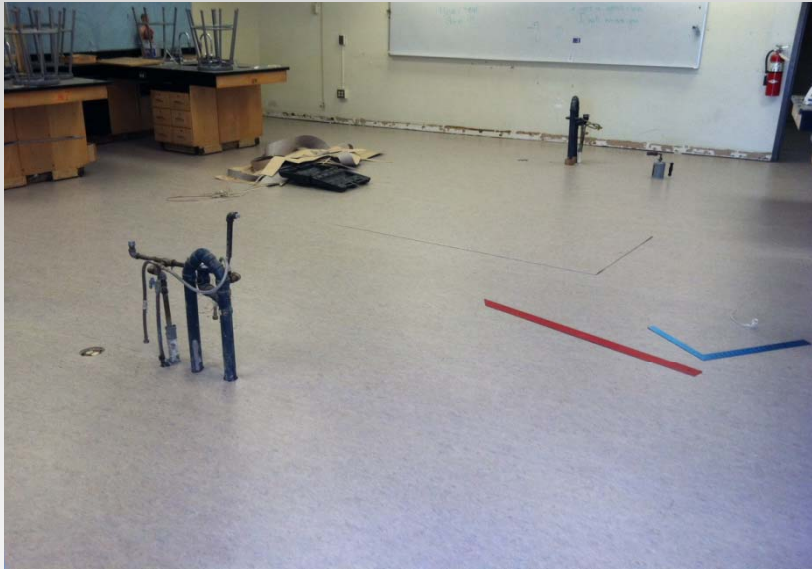
Exterior Paint

Concrete

Complete
by the start
of school



MacArthur Modernization



Linoleum



Carpet

New
Classroom
Building
ADA upgrades
Technology
Doors

Tackable walls
Low Voltage
Casework
Exterior Paint

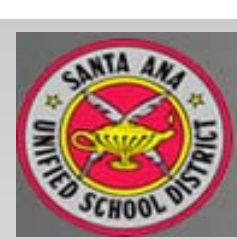
Completion
August 2012



New 12-Classroom Building

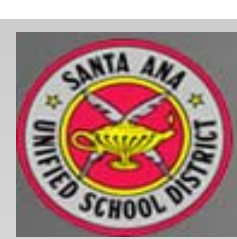


Concrete



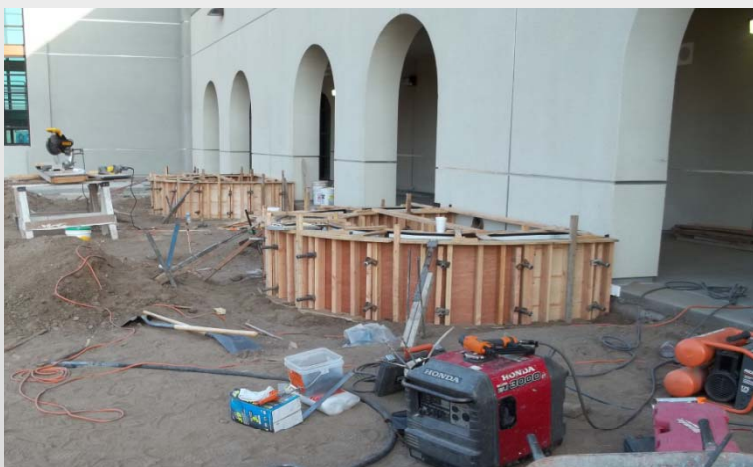
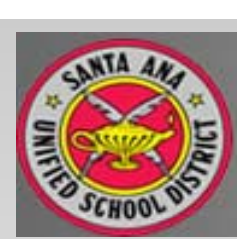
Completion
August 2012





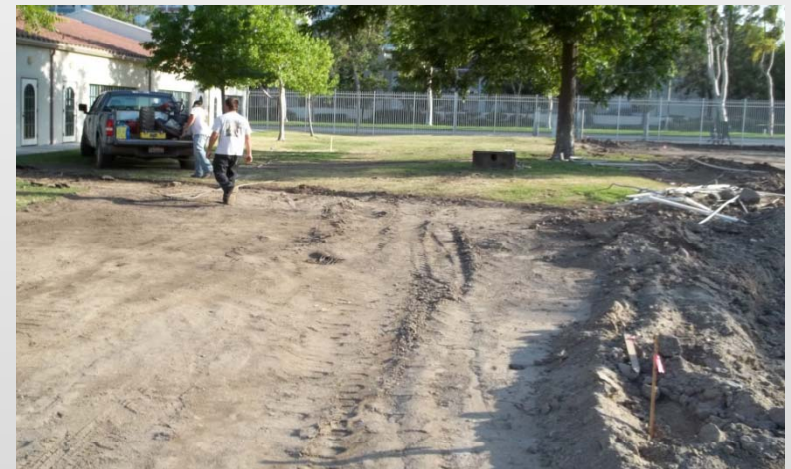
Completion Date:
Winter Break 2011





Seat Walls

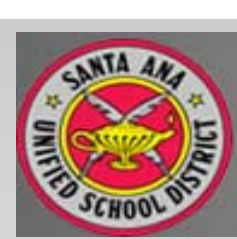
Complete
by the start
of school



New Student Drop-off 14



Complete
by the start
of school



New Quad



New Field



New building occupied this spring

Site improvements complete by the start of school



Site Work



Classroom Building Complete



Parking lot improvements

Complete
by the start
of school

Completion:
Summer 2012



Earthwork



Building shell fabricated off-site



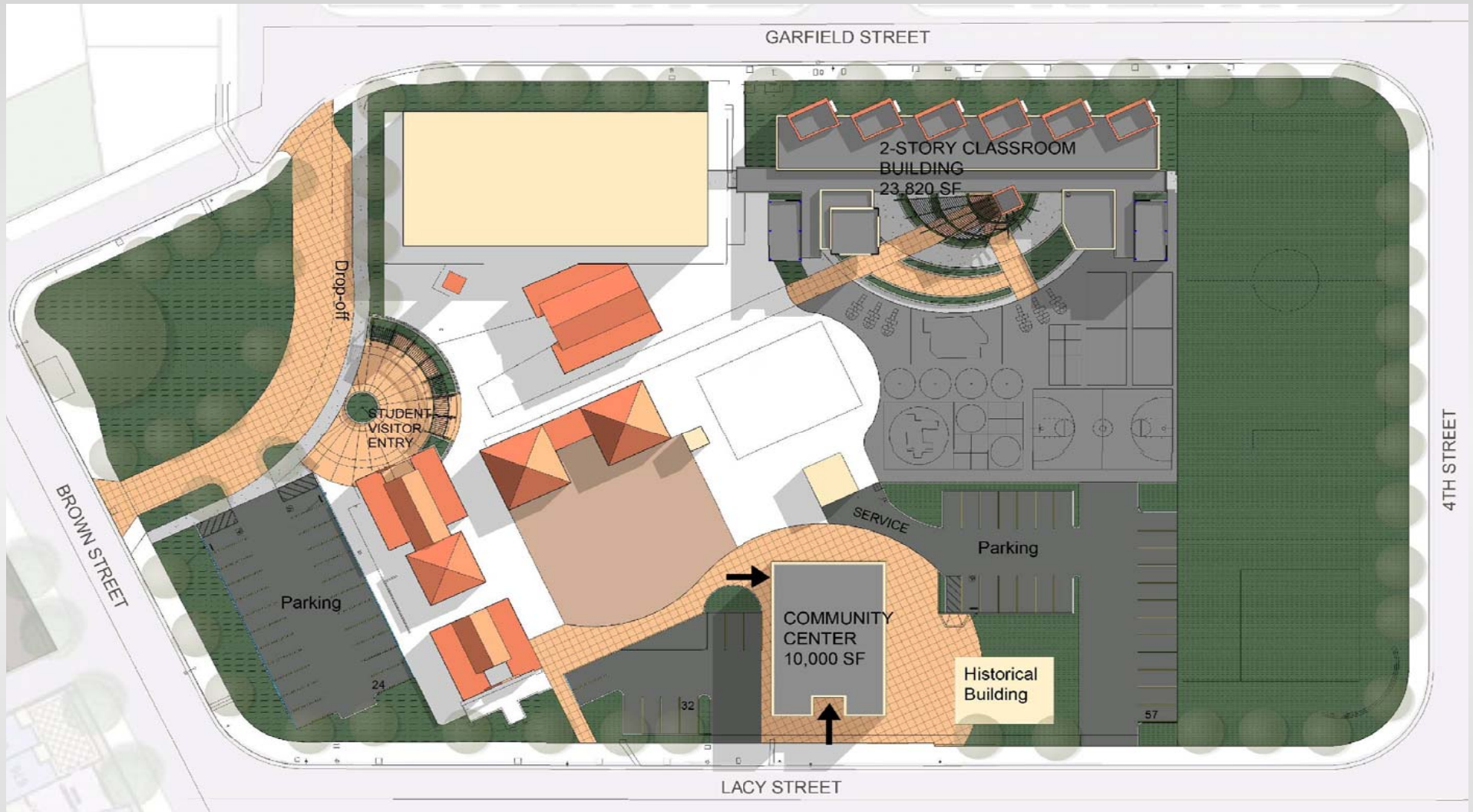
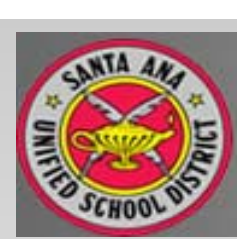
School Name	SAB Unfunded Approval	State Share	District Share	Total Project Funding	SAB Cumulative Amount
Adams	1/27/2010	\$1,287,806	\$858,537	\$2,146,343	\$184,815,364
Madison	5/26/2010	\$611,449	\$407,633	\$1,019,082	\$201,366,555
McFadden	5/26/2010	\$2,050,338	\$1,366,892	\$3,417,230	\$228,058,147
Remington	5/26/2010	\$2,762,292	\$1,841,528	\$4,603,820	\$228,079,191
Roosevelt	6/23/2010	\$1,722,837	\$1,148,558	\$2,871,395	\$233,917,606
Muir	6/23/2010	\$1,052,130	\$701,420	\$1,753,550	\$311,622,800
Carr	6/23/2010	\$3,270,923	\$2,180,615	\$5,451,538	\$322,513,435
Spurgeon	6/23/2010	\$5,781,010	\$3,854,007	\$9,635,017	\$325,784,358
Martin	6/23/2010	\$941,935	\$627,957	\$1,569,892	\$340,054,621
Lowell	8/04/2010	\$2,170,509	\$1,447,006	\$3,617,515	\$340,996,556
Greenville	8/04/2010	\$3,311,733	\$2,207,822	\$5,519,555	\$404,306,028
Lathrop	8/04/2010	\$2,503,759	\$1,669,173	\$4,172,932	\$416,019,847
Franklin	8/04/2010	\$1,320,269	\$880,179	\$2,200,448	\$418,523,606



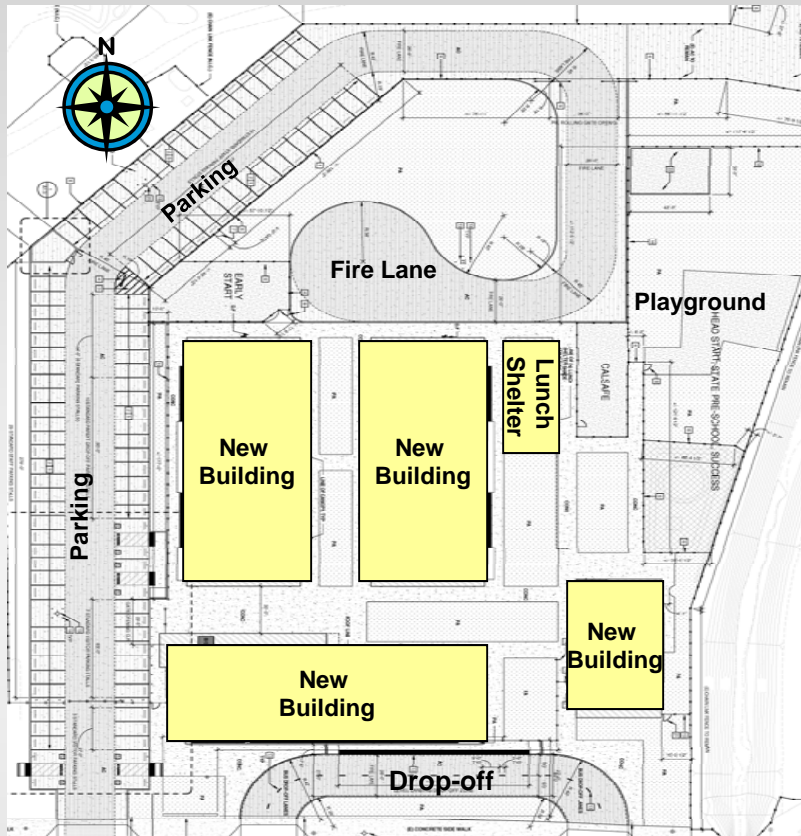
School Name	SAB Unfunded Approval	State Share	District Share	Total Project Funding	SAB Cumulative Amount
Monte Vista	8/04/2010	\$963,659	\$642,439	\$1,606,098	\$420,807,534
Sierra	8/04/2010	\$1,556,663	\$1,037,775	\$4,172,932	\$433,346,336
Jefferson	8/25/2010	\$2,429,430	\$1,619,620	\$2,200,448	\$535,479,495
Wilson	10/06/2010	\$3,700,619	\$2,467,079	\$2,594,438	\$766,350,876
Santa Ana	10/06/2010	\$14,975,661	\$9,983,774	\$4,049,050	\$858,797,040
Fremont	10/06/2010	\$1,539,948	\$1,026,632	\$6,167,698	\$869,325,821
Monroe	11/03/2010	\$1,406,242	\$937,495	\$24,959,435	\$878,956,536
Taft	12/15/2010	\$1,352,683	\$901,789	\$2,566,580	\$1,008,860,254
Santiago	2/23/2011	\$2,383,229	\$1,588,819	\$2,343,737	\$1,265,008,021
Harvey	3/23/2011	\$1,587,990	\$1,058,660	\$2,254,472	\$1,294,833,020
Willard 2	3/23/2011	\$2,070,203	\$1,380,135	\$3,972,048	\$1,305,356,582
Diamond	6/22/2011	\$2,454,74	\$1,245,147	\$2,646,650	\$1,318,950,749
Total Funding		\$91,873,885	\$62,238,041	\$154,111,926	



- Garfield – City of Santa Ana
- Santiago K-8 – Project savings
- Franklin – Project savings
- King – Project savings
- Wilson – Project savings



- Plans DSA approved
- Current - Submit to OPSC for approval
- Construction anticipated to begin summer 2012



Project Schedule

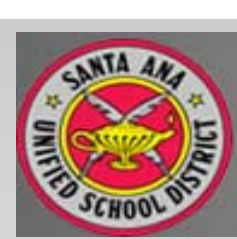
- Spring 2011: approval of OPSC appeal
- Current: Division of the State Architect review and approval of plans
- Fall 2011: Begin construction

Project Details

- OT/PT and Adaptive PE rooms
- 19 new classrooms (Cal-Safe, SUCSESS, State Preschool)
- 13 therapy rooms
- Early Start parent training room & offices

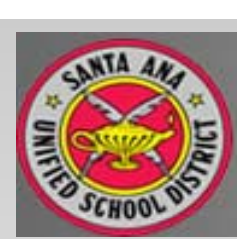


← North

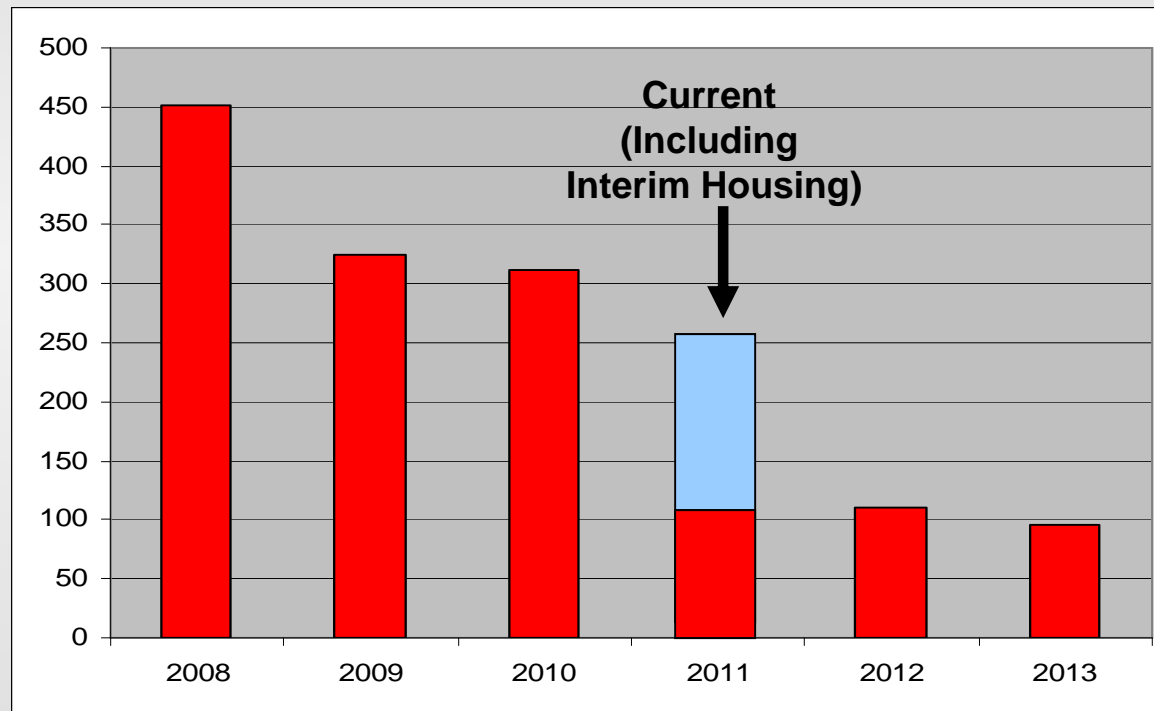


State of the art Culinary Academy:

- Demolished and reconfigured existing home economics lab
- New reconfigured work stations with ranges, ovens, sinks, and mobile tables
- Demonstration areas
- Plumbing
- HVAC
- Technology



2008	2009	2010	2011	2012	2013
452	325	311	253	111	95*



*Does not account for all COSS P2P projects

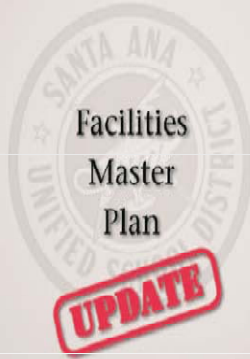
For enrollment changes and instructional program flexibility, 5% -10% of the permanent classroom inventory should be portable classrooms.
(5% - 10% = 103 – 206 portable classrooms)

Measure G will provide funds to make necessary safety improvements to our schools. Roads will be repaired. Electrical wiring and power will be upgraded so our students can have access to modern technology. Classrooms and science labs will be upgraded to provide our students with the tools they need to prepare them for success, college and future careers. Measure G funds will be leveraged to access up to \$120 million in state facility funds for SAUSD that would otherwise go to other school districts in Orange County and other parts of California. Our students deserve the best facilities we can provide.



Santa Ana
Unified School District
Jane A. Russo, Superintendent

April, 2011



Board of Education

- José Alfredo Hernández, J.D., President
- Rob Richardson, Vice President
- Audrey Yamagata-Noji, Ph.D., Clerk
- John Palacio, Member
- Roman A. Reyna, Member

Administration

Jane A. Russo, Superintendent

Joe Dixon

Assistant Superintendent, Facilities & Governmental Relations
Phone: (714) 480-5356 • Fax: (714) 480-5362
Email: joe.dixon@sauisd.us



School Name	+ P2P	Roofing	Health/Safety	+HVAC	Technology	Seismic	COMMENTS
ELEMENTARY							
Adams			C		PFP		REPAIR PAVING/REPLACE RESTROOM FIXTURES
Carver		PFP	C		C		REPLACE PORTABLE CLASSROOMS
Davis		PFP	C		UC	PFP	REPAIR PAVING
Diamond	C		C		C		REPAIR PAVING
Edison		C	C		PFP		REPAIR PAVING
Esqueda			C		C		UPGRADE TECH INFRASTRUCTURE
Franklin	PFP	C	C	PFP	PFP		REPLACE PORTABLE CLASSROOMS
Fremont		C	C	C	PFP	C	REPAIR PAVING
Garfield	PFP	C	C	C	PFP		UPGRADE TECH INFRASTRUCTURE
Greenville	C	C	C	PFP	C		REPLACE PORTABLE CLASSROOMS/REPAIR VENTILATION
Harvey			C		PFP		REPAIR PAVING/REPLACE RESTROOM FIXTURES
Heninger	UC		C		UC		REPLACE PLAY EQUIP/INSTALL SHADE STRUCTURE
Hoover		C	C		UC		REPAIR ROOF/REPLACE PLAY EQUIP
Jackson		C	C		UC		REPAIR ROOF/RETROFIT FOR SEISMIC SAFETY
Jefferson			C		C		UPGRADE TECH INFRASTRUCTURE/RETROFIT FOR SEISMIC SAFETY
Kennedy	C		C		C		REPAIR PAVING/REPLACE RESTROOM FIXTURES
King	PFP		C		C		UPGRADE ELECTRICAL/TECH INFRASTRUCTURE/REPLACE PLAY EQUIP
Lincoln		PFP	C		C		REPAIR ROOF/RETROFIT FOR SEISMIC SAFETY
Lowell	C		C		C		REPLACE PORTABLE CLASSROOMS
Madison	C		C		C		REPLACE PORTABLE CLASSROOMS
Martin	C	UC	C		C		REPLACE PORTABLE CLASSROOMS
Mitchell	PFP		C		PFP		UPGRADE TECH INFRASTRUCTURE
Monroe			C		C	C	REPAIR PAVING/RETROFIT FOR SEISMIC SAFETY
Monte Vista		C	C		PFP		REPAIR ROOF/REPLACE RESTROOM FIXTURES
Muir Fund.			C		PFP		UPGRADE TECH INFRASTRUCTURE
Pio Pico		UC	C	C	PFP		REPAIR ROOF/REPLACE PLAY EQUIP
Remington		PFP	C	C	PFP		RENOVATE RESTROOM/REPLACE VENTILATION
Romero-Cruz			C		PFP		REPLACE PLAY EQUIP
Roosevelt		PFP	C		C		REPLACE ROOFING/UPGRADE ELECTRICAL & TECHNOLOGY
Santiago	C		C		C		REPLACE PORTABLE CLASSROOMS
Sepulveda		UC	C		UC		REPAIR ROOF/REPLACE PLAY EQUIP
Taft/Taft/D.H.H.			C		C	PFP	REPLACE PLAY EQUIP
Thorpe Fund.			C		C		REPLACE PLAY EQUIP
Walker			C		C		REPAIR PAVING/REPLACE RESTROOM FIXTURES
Washington		PFP	C		C		REPAIR ROOF/RENOVATE RESTROOMS/INSTALL SHADE STRUCTURE
Wilson	PFP	C	C		C		REPLACE PORTABLE CLASSROOMS
INTERMEDIATE							
Carr	C	PFP	C		C		REPLACE PORTABLE CLASSROOM/REPLACE VENTILATION
Lathrop	PFP		C		C		REPAIR PAVING
MacArthur	UC		C		UC		REPAIR PAVING
McFadden		UC	C		PFP		REPAIR ROOF/REPAIR PAVING
Mendez Fund.			C		PFP		REPAIR PAVING
Sierra	C	PFP	C		C		REPLACE PORTABLE CLASSROOMS
Spurgeon	UC	PFP	C	PFP	UC		REPLACE PORTABLE CLASSROOMS/REPAIR ROOF/REPLACE VENTILATION
Villa Fund.			C		PFP		INSTALL SHADE STRUCTURE
Willard	PFP	UC	C	PFP	UC		REPAIR ROOF/REPLACE HVAC
HIGH SCHOOL							
Century	UC	C	C	C	UC	C	REPLACE ELECTRICAL/REPAIR PLUMBING
Chavez			C		C		INSTALL MULTI PURPOSE ROOM
Godinez			C		UC		REPAIR PAVING
Lorin Grisct			C		C		UPGRADE TECH INFRASTRUCTURE
Middle College			C		C		UPGRADE TECH INFRASTRUCTURE
Saddleback	C	C	C	C	UC		REPLACE PORTABLE CLASSROOMS
Santa Ana	UC	UC	C	UC	UC	UC	MODERNIZE PERMANENT BUILDS/REPLACE PORTABLE CLASSROOMS
Segerstrom			C		C		INSTALL SECURITY CAMERAS
Valley		UC	C		C		RENOVATE AUDITORIUM

E-rate funding to enhance infrastructure, upgrade A/V equipment, and provide wireless internet

Monte Vista restrooms

Santiago asphalt

- C** = Complete
- PFP = Planned future project
- UC = Under construction



Summer project update
September 13th meeting